

Downloading Courses (GolfBuddy Pro/ GolfBuddy Tour)

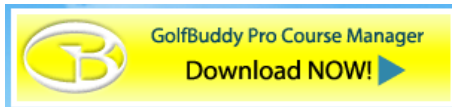
(note: GolfBuddy programs can only operate on Windows systems at this time and not Mac or Linux at this time. Also, please use Internet Explorer for any downloads as Firefox, Safari, and any other browser may have problems.)

For GolfBuddy Pro/Tour:

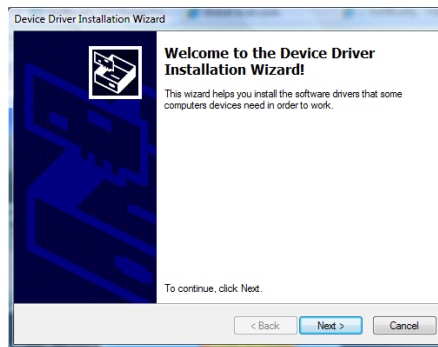
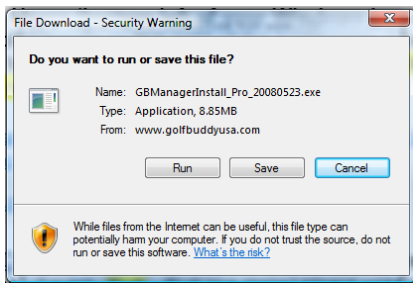
1. Visit www.golfbuddyusa.com and obtain a username and password by clicking the “join us” button at the top of the page and following the instructions. If you have already created an account and have an ID and password already, move on to the next step.



2. Once obtaining an account, go back to www.golfbuddyusa.com and click on the large yellow “GolfBuddy Pro Course Manager Download NOW!” button.

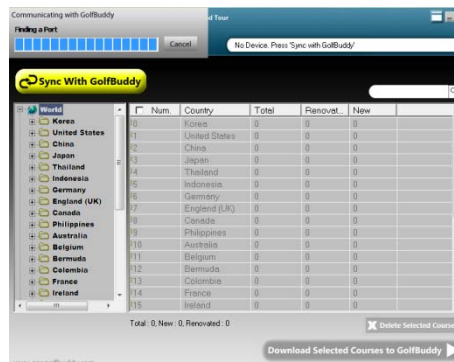


3. When any window pops up and asks whether you want to save or run, click “run”. After done downloading and installing the Course Manager, a Device Driver Installation Wizard will open. Go ahead and install “install” and “next” whenever needed, and “finish” at the end.

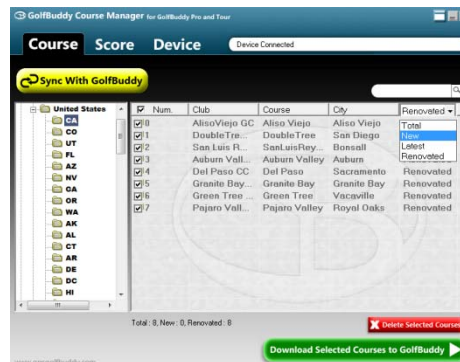
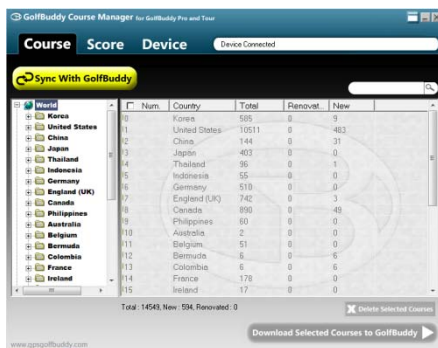


4. Plug in your GolfBuddy Pro/Tour unit into the computer using the provided USB cable and turn on the unit.

5. Open the GolfBuddy Course Manager by double-clicking on the icon on your desktop. Enter your I.D. and password, and wait as the Course Manager installs updates and searches for your device.



6. Using the menu to the left, you can scan through all available golf courses from all around the world. If you'd like to download a course to your unit, simply select the box next to it and click "download selected courses to GolfBuddy".



On the top right of the course listing is a tab which originally says "Total". This describes the status of the golf courses, and originally is set to all available golf courses in the chosen area. To list only certain types of courses, click the tab and chose "New", "Latest", or "Renovated".

- "New" courses are those which were recently uploaded onto our course database and are not currently inside your unit.
- "Latest" courses are those which are currently inside your unit.
- "Renovated" courses are those which have been recently changed and need to be re-downloaded in order to be accurate.

If you'd like to select the entire list in the category you are viewing, simply check the box at the top right of the list screen, to the left of "Num."